



# Itsuwa USA Inc.

- **Established** 2004
- **Capital** USD \$250,000
- **Representative** General Director / Yutaka Kuwahara, CFO-Sales Manager / Shinnosuke Kanamori
- **Office** 73 Cavalier Blvd #208 Florence KY 41042
- **Phone** 1-859-371-4444 / 1-859-371-2444
- **Headquarters** ITSUWA CORPORATION \*Osaka, Japan
- **Global Network** Singapore, China(Hong Kong, Shanghai, Dongguan), Bangkok, Vietnam(HN/HCM), Philippines, USA
- **Overview** Supplier of high quality, low cost precision machinery components & processing tools
- **Product**
  - Custom fixtures/MRO parts < CN: VN: PMTT/BM, JINYUAN/HONGXIE >
  - Off-the-shelf parts < OMRON, SMC, THK, NSK, Nachi etc. >
  - Automation machines < USA: TY, VN: TCI, VCC >
  - Design drawings < VN: IDEA >
  - Diamond Tool < INDIA: Sterling, CUMI/WENDT, SOLAR >
  - Grinding Wheel < MITSUI/CUMI/WENDT >
  - Anti-spatter agent < JP/ORIC >
  - EDM wire < OPECMADE >
  - Industrial filters < JP: Z Industries, KOREA: VIKO >
  - Industrial Brushes / Flap Wheels < JP: TAIYO SUNPOWER>
  - Adhesives < JP: KONISHI >
  - Soldering Tip < CN: DURATIP >

➤ **History**

Oct. 2004 Established in CA

Oct. 2015 Transfer to KY

➤ **Organization**

Sales 3, Operation 2

Mr. Shin Kanamori

Email : [kanamori@itsuwaus.com](mailto:kanamori@itsuwaus.com)

Mr. Sunny Kwan

Email : [sunny@itsuwaus.com](mailto:sunny@itsuwaus.com)

Mr. Jacob Booth

Email : [jacob@itsuwaus.com](mailto:jacob@itsuwaus.com)

Ms. Rei Suzuki

Email : [suzuki@itsuwaus.com](mailto:suzuki@itsuwaus.com)

Ms. Airi Jones

Email : [jones@itsuwaus.com](mailto:jones@itsuwaus.com)

**Group Business**



Electronics Manufacturing Service



Factory Solution



Electronics



Coating Technology



Consumer e-Commerce



Operation and Maintenance Energy



Nursing Care



Pet Appliance

We are a Japanese trading company that imports and exports direct and indirect materials to manufacturers.

We will expand our transportation know-how and merchandise as a trading company.

We will continue to expand our business to meet the needs of our customers.



ITSUWA USA INC.



# ITSUWA GLOBAL NETWORK



**ITSUWA CORPORATION / HQ**

TN BLD. 1-8, 1-CHOME, UEHONMACHI-NISHI, CHUOKU, OSAKA

**ITSUWA HONG KONG**

ROOM 1314, 14/F, PENINSULA SQUARE, WEST WING, 18 SUNG ON STREET, HUNGOM, KOWLOON, HK

**SHANGHAI OFFICE**

ROOM NO.910 JINZHONG BUILDING 680 ZHAOJIABANG RD. XUHUI DISTRICT, SHANGHA I

**DONGGUAN OFFICE**

1015, 10/F, Parkway Financial Centre, No.121, JinXiaDongMen Middle Road,  
ChangAn Town, Dongguan, GuangDong, China,523850

**ITSUWA USA**

73 Cavalier Blvd. #208 Florence KY 41042

**ITSUWA SINGAPORE**

300 JALAN BUKIT HO SWEE #01-02 SINGAPORE

**ITSUWA BANGKOK**

790/6 Thonglor Tower B, Soi Thonglor 18, Sukhumvit 55 Rd., Klongtannua, Wattana, Bangkok

**ITSUWA VIETNAM-HANOI**

9F., ICON4 Building, 243A De La Thanh, Lang Thuong Ward, Dong Da District

**ITSUWA VIETNAM-HCM**

A16, Resettlement Zone, Hamlet 5, Phuoc Kieng Town, Nha Be Dist, HCMC

**MANILA OFFICE**

Unit B1-A, 10Fl, Marvin Plaza Build, 2153 Don Chino Roses Avenue, Makati



ITSUWA USA INC.



# EMS

## ➤ Business :

Contract manufacturing of electronic equipment

Factory : Vietnam, Thailand, China



## ➤ Feature:

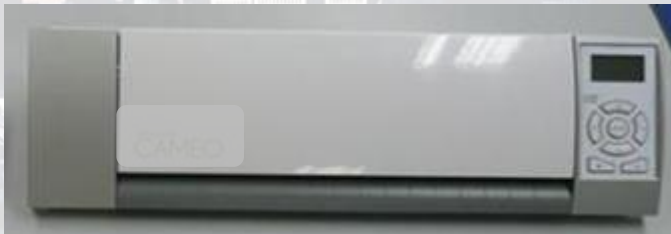
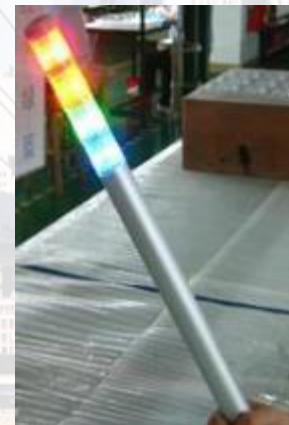
In addition to outsourcing the process from material procurement to production and distribution, we can also make the following proposals.

Take advantage of our logistics network established through many years of operation.

Implementation of quality inspection by our quality assurance department

Assistance in customer selection of suppliers (a service that evaluates quality and environmental management from multiple perspectives).

Development and proposal of new suppliers



# Factory Solution

## "One Stop Solution"

ITSUWA  
*FACTORY SOLUTION*

We aim to be the one-stop shop for your factory needs.

- **Item** : Consumables and subsidiary materials essential for manufacturing and processing, or agent business and sales for FA- related facilities, jigs and spare parts.







# Off-the-shelf parts

## ➤ Non-exhaustive list of brands we can quote:

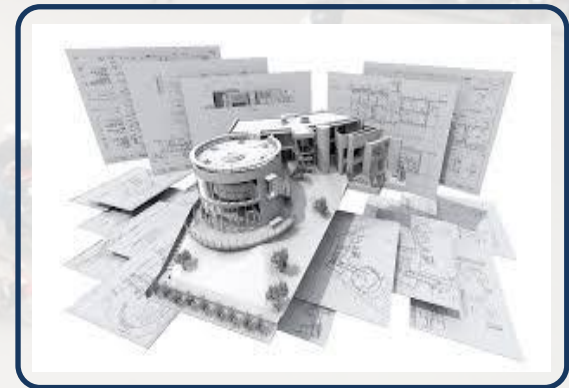
- OMRON (Official Distributor)
- SMC
- THK
- ORIENTAL MOTOR
- PISCO
- TRUSCO NAKAYAMA
- IKO
- TSUBAKIMOTO CHAIN
- KOGANEI
- CKD
- NACHI
- NB
- NSK
- JTEKT
- NMB

The OMRON logo is displayed in a blue, sans-serif font.The SMC logo features a blue circular icon with three horizontal wavy lines to the left of the letters "SMC" in a blue, sans-serif font.The THK logo consists of the letters "THK" in a stylized, red, blocky font.The NSK logo is shown in a bold, red, sans-serif font.The NACHI logo features the word "NACHI" in a red, sans-serif font, with a small red triangle above the letter "A".



# Drawing Services

- **Product** : Proposals for different equipment according to the customer's current situation
  - Trace, 3D modeling, contract drawing from the actual product
  - Design work support for concept design, assembly drawing creation, parts drawing creation
  - Contract design creation of electrical and mechanical system control programs  
(Assembly, caulking, screw tightening, welding, packing, washing machine  
Transport equipment (loader / unloader), press-fitting machine, transport line for painting, etc.)
- **Design** : Vietnam / IDEA (in HCM)
  - ※CAD Software : Autocad, Inventor, SolidWorks, Icad/Sx, etc.
  - ※Manpower Capacity : 205 persons
- **Strengths** : Q Many achievements in manufacturing companies  
(We can use both English and Japanese to communicate)
  - ※Itsuwa Vietnam Staff will also take care of the cases
  - C Cost merit with overseas production
  - D No difference between US made design
  - S Quick customer support with US/ Vietnam Staff
- **Flow**  
Basic Information → Initial proposal → First Approval → Quote → Final Approval  
Regular meeting for the update → Final Data Completion → Delivery → After Service



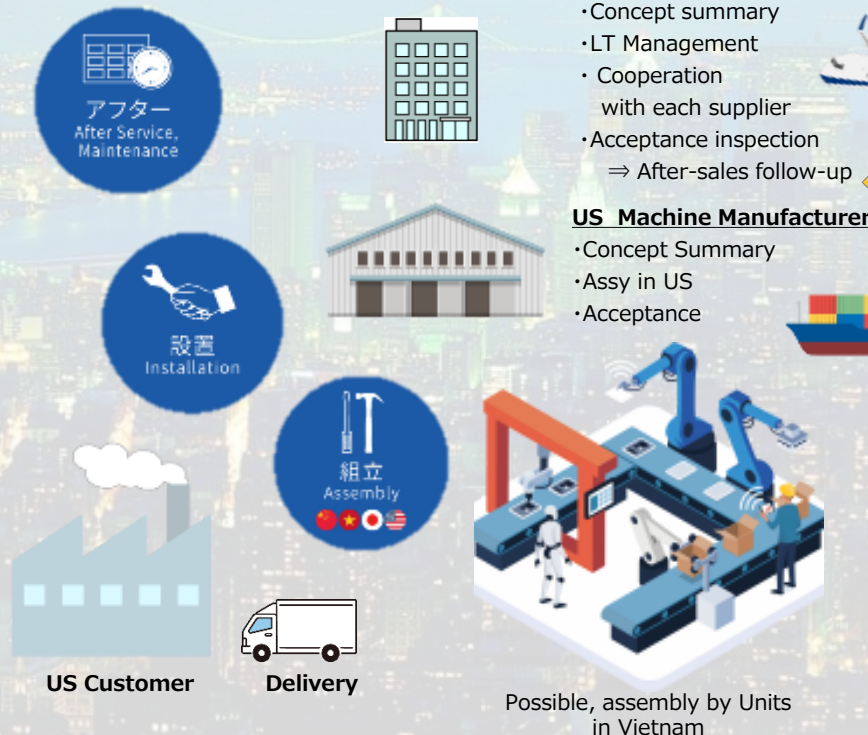


# Custom Automation Machines

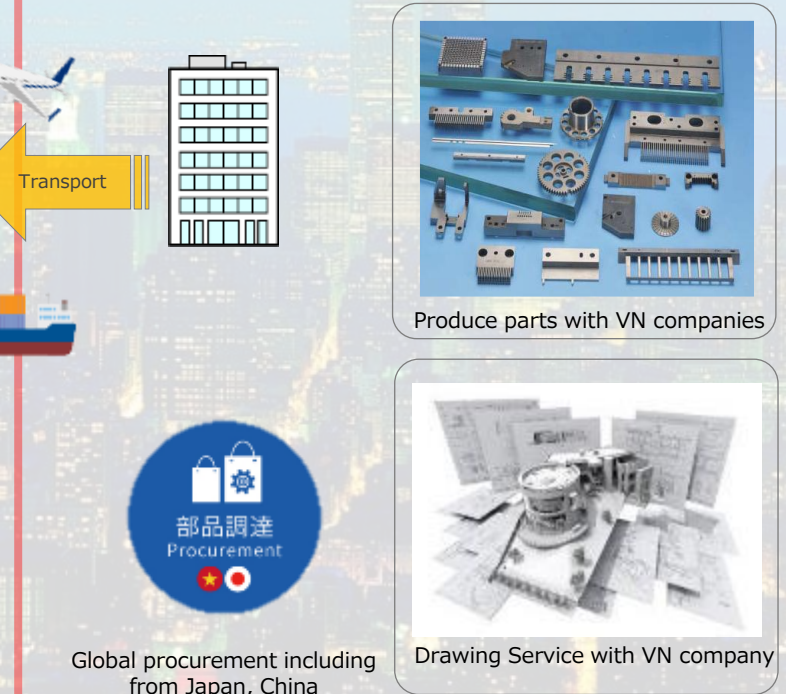
- **Products** : Equipment proposal for each purpose according to the customer's current situation  
 Ex; Assembling, caulking, screw tightening, welding, packing, washing machines, Transportation equipment (loader/unloader), press-fitting machine, coating transport line, etc.



## USA



## VIETNAM



# GRINDING WHEEL

## ➤ Products

Manufactured at Japanese Plant / CBN & DIAMOND & Inner GW

Manufactured at Thailand Plant / Normal Grain stones



## ➤ Proposal

Q: Achievements for Japanese Manufacturing companies

C: Reduction in unit cost through Thailand production and use of regular flights

D: Reduced delivery time by use of local inventory operation ( WH in Chicago )

S: On-site improvement proposal

## ➤ Estimate Information Required

Wheel information (shape, size, abrasion grain, degree of coupling, circumferential speed)

Consumption

Work material and surface treatment, Finishing condition

Processing conditions (method, replacement, number of paths, feed speed, dress interval, etc...)

## ➤ Flow of Proposals

Information → Estimate → Order samples → Initial Try → Approval

Inventory assurance adjustment → Follow up



# GRINDING WHEELS

## ➤ Product

Ceramic Grind Wheels (Centreless Wheel, Cylindrical Wheel, Segments)

## ➤ Manufacturer:

Sterling Abrasives (International Abrasives, Inc) (US)

## ➤ Proposal

Q: Achievements for Japanese Manufacturing companies

C: Reduction of unit cost through Indian Manufacturer

D: Local inventory operations allow short delivery time

S: On site improvement to address current issues

## ➤ Estimate Required Information

Current product information (shape, size, diamond type, drawings)

Grind stone information (shape, size, abrasive grain, degree of coupling, circumference, consumption)

## ➤ Flow of Proposal

Information → Estimate → Samples → Initial Try → Approval

Adjustment → Delivery → Follow up



# GRINDING, ROTARY DRESSER, TAPS

## ➤ Products

CBN/DIAMOND wheels, rotary dressers, honing wheels, PCD chips, tapping tools, and abrasive belts

## ➤ Manufacture

Wendt India LTD Joint venture between Wendt GmbH & CUMI  
Plant located in Tamil Nadu, India

## ➤ Proposal

Q: Achievements for Japanese Manufacturing companies

C: Reduction of unit cost through Indian Manufacturer

D: Local inventory operations allow short delivery time

S: On-site improvement proposal

## ➤ Estimate Required Information

Current production information (shape, size, grain, degree of coupling)

Consumption

Material to be machined (including material and surface treatment)

Processing conditions (method, replacement, number of paths, feed)

## ➤ Flow of Proposal

Info → Estimate → Order samples → Initial Try → Approval → Follow up





# GRIND WHEEL / DRESSER

## ➤ Products:

Diamond Dressers / Diamond & CBN Honing Stones / Cutting tools

Diamond & CBN Resin Bond Wheel / Diamond Metal Bond Wheel /

Diamond & CBN Electroplated Products / Diamond Lapping Products /

Diamond Gauging & Burnishing Tools

## ➤ Manufacture

SOLAR Mumbai, India

## ➤ Proposal

Q: Achievements for American Manufacturing companies

C: Reduction of unit cost through Indian Manufacturer

D: Local inventory operations allow short delivery time

S: On site improvement to address current issues

## ➤ Estimate Required Information

Current product information (shape, size, diamond type, drawings)

Grind stone information (shape, size, abrasive grain, degree of coupling, circumference, consumption)

## ➤ Flow of Proposal

Information → Estimate → Samples → Initial Try → Approval

Adjustment → Delivery → Follow up



# METAL FLUID, DETERGENT, ANTI-RUST

## ➤ Product

Water soluble metal fluid (coolant) for cutting and grinding  
Cleaning agents, anti-rust agents, punch presses

## ➤ Manufacturer: Dubois Chemicals

Processing group of MILACRON Group in Cincinnati, OH  
Production in Netherlands, Shanghai, Korea, Mexico, US

## ➤ Proposal:

Q: Achievements

C: Proposals for total cost reduction through long life

D: Local inventory operations allow short delivery time

S: On site improvement liquid management (periodic analysis)

## ➤ Estimate Required Information

Current product: manufacturer and product number

Detail status: Request for machined materials tested and normal conditions, rust proofing period, etc.

## ➤ Flow of proposal

Information → Estimate → Samples → Initial Try → Approval → Follow up





# EDM WIRE

- **Product:** EDM wire for wire processing
- **Manufacture:**
- **Proposal**
  - Q: Achievements
  - C: Propose faster machining and total cost reductions
  - D: Local inventory operations allow short delivery time
  - S: On site support
- **Estimate Required Information**
  - Current product information (manufacturer and product number)
  - Information on materials to be machined (speed, size, consumption)
- **Flow of Proposals**
  - Information → Estimate → Samples → Initial Try → Approval
  - Adjustment → Delivery → Follow up





# INDUSTRIAL FILTER

- **Product:** Cartridges, bag filters, and precision HEPA filters
- **Manufacture:** Japan-Zet Industries, Ltd.  
Korea and Vietnam (PIKO)
- **Proposal**
  - Q: Achievements
  - C: Cost reduction through production in Korea and Vietnam
  - D: Local inventory operations allow short delivery time
  - S: On site support
- **Estimate Required Information**
  - Current information (manufacturer and product number)
  - Materials current status (usage conditions, applications, volume, etc.)
- **Flow of Proposals**
  - Information → Estimate → Samples → Initial Try → Approval
  - Adjustment → Delivery → Follow up

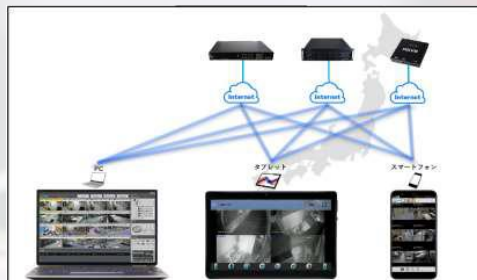




# INDUSTRY 4.0/ SMART FACTORY

## 「Factory Control」

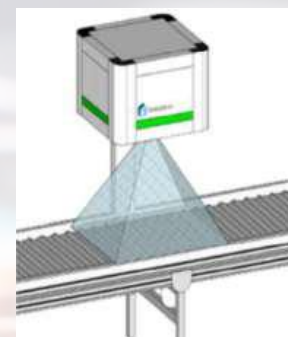
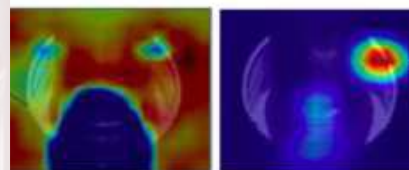
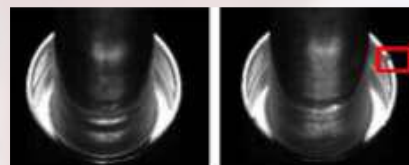
**VAAKEYE**



**SEEMS**

## 「Production Control」

**Hutzper**



**fastable.ai**

## 「Logistics/ Inventory Control」

**Smart Shopping**



**neo.LAB**



## 「Facility Control」



**PUSHLOG**  
つけるだけIoT  
「遠隔監視」をわずか10分で立ち上げ!



**nsx**  
Natural Science eXecution

